



MOWBRAY NEWS

Term 4 Week 2
20 October 2022

PRINCIPAL'S REPORT

Welcome Back!!

A big WELCOME BACK to all our MPS families. It is hard to believe we are already in Term 4!!

Term 4 is always a busy term, academically in classrooms as well as excursions, K-2 swim school, 3-6 surf education, Performing Arts Night, orientations for our 2023 Kindergarten students and our Year 6 farewell activities.

Please keep up to date with the School Stream notifications and the calendar for upcoming dates and information.

Returning late or not returning in 2023?

Documentation of student movement is essential for the school executive to make 2023 classing structure decisions. There is a form to fill in (located on School Stream in the 'School Information' Section) to inform the school if:

- your family will be taking extended leave over the December/January holidays and your child will be returning to school later than Tuesday 31 January 2023 (it is essential we have documentation stating your proposed date of return) or
- your child in Kindergarten – Year 5 will not be returning to MPS in 2023

I would politely request that any families who fit into these categories please fill out the form electronically via School Stream.

Thank you for your support with our 2023 planning.

2023 classing

At the end of every year, teachers and executive staff put many hours into forming classes for the next year. Teachers take into account how children work, who children work best with and friendship factors. As a school community we need to remember that children are in class for the best possible education, and classroom teachers have a deep understanding of class dynamics and how the students in their classes work best.

If you are concerned that your child has significant special needs that your 2022 classroom teacher is unaware of, or there are significant extenuating circumstances that need to be taken into account in 2023 classing, you can contact me via email or phone before 11 November.

Emails should be sent to mowbray-p.school@det.nsw.edu.au with the subject line 'Attention Principal re: 2023 classing' explaining your child's significant needs or extenuating circumstances. All emails will be treated confidentially.

Any requests made will be considered, but are **not** guaranteed. Any request sent through after 11 November 2022 will not be able to be considered.

PRINCIPAL'S REPORT

Well Done

A huge WELL DONE to Maks who came third in the Regional Carnival in the discus event. He will now be representing NSW at the National Championships in Brisbane!

Maks has raffle tickets to sell to support his trip for the championship, he will be selling them before and after the Halloween disco and in the playground before school. Please keep your eye out for him and buy tickets to support.

Good luck Maks!!



Selective High School Application for 2024 – Year 5 students

If you would like to have your child considered for Year 7 selective high school entry in 2024, you need to apply online using a valid email address (not the student's email address).

Detailed instructions on how to apply online are available at <https://education.nsw.gov.au/public-schools/selective-high-schools-and-opportunity-classes/year-7>.

An intention to apply note with detailed information was handed to all Year 5 students on Monday Week 2 Term 4. It has also been included in the newsletter email. This note is not an application. Applications need to be made online.

The application website opens at that link on 18 October 2022 and closes on 16 November 2022. You must apply before the closing date.

CAROLINE ALFORD - PRINCIPAL

PRINCIPAL'S REPORT

CONGRATULATIONS to the following students who will receive Awards:

K - 2 GOLD AWARDS –presented at Assembly on 25 October

KC	Sahasra K
KE	Samuel W, Daisy L
KH	Jasmine C B
KPT	Hannah B, Isabelle C, Ian C, Edward A
KW	Valerie C, Harry J, Eleanor B-S
1B	Piper L
1S	Jessica S, Hayden B
2B	Felix K
2T	Nishit S, Maddison G
2PE	Theodore S

STAGE 2 GOLD AWARDS – presented at Assembly on 1 November

3LA	Jacqueline B, Isla R
4V	Shahan N

STAGE 3 GOLD AWARDS – presented at Assembly on 15 November

5FV	Soraka T
6HB	Natasha Z
6S	Hriday S

PRINCIPAL'S REPORT

DATES TO REMEMBER – Term 4 2022

WEEK 3	
Tuesday 25 October	Life Education commences Cyber Safety talk – Stage 2 and 3 K - 2 Assembly hosted by KE and KW
Wednesday 26 October	Kindergarten 2023 Orientation morning – session 3
Friday 28 October	World Teacher's Day PAN Evening at Lindfield Learning Village
WEEK 4	
Monday 31 October	P&C Halloween dress-up day & disco
Tuesday 1 November	Stage 2 Assembly hosted by 4V

Intention to apply for Year 7 placement in a selective high school in 2024

Dear Parent/Carer

Selective high schools cater for academically gifted students with high potential who may otherwise be without sufficient classmates at their own academic standard. Selective high schools help these students to learn by grouping them with students of similar ability, and by using specialised teaching methods.

If you would like to have your child considered for Year 7 selective high school entry in 2024, you need to apply on the internet using a valid email address (not the student's email address).

Detailed instructions on how to apply and the link to the online form will be available in early-October 2022 at <https://education.nsw.gov.au/public-schools/selective-high-schools-and-opportunity-classes/year-7>.

Applications open on 18 October 2022 and close on 16 November 2022. You must apply before the closing date.

You must submit only ONE application for each student.

The Selective High School Placement Test will be held on **Thursday 4 May 2023**.

The tear-off slip below is NOT an application, it is advice to the school that you intend to apply. The school CANNOT apply on your behalf.

Yours sincerely

Principal

Cut along the dotted line and return the completed slip below to this school by 16 November 2022.

THIS IS NOT AN APPLICATION FOR ENTRY TO A SELECTIVE HIGH SCHOOL.

This is a notice to your primary school only that you intend to apply.

TO APPLY GO TO THE ONLINE FORM AT: <https://education.nsw.gov.au/public-schools/selective-high-schools-and-opportunity-classes>

----- Cut here and return the note below to the school -----

Intention to apply for Year 7 placement in a selective high school in 2024

Student's name: _____ Class: _____

I intend to apply for selective high school entry in Year 7 in 2024 for my child through the Selective Education Unit website between 18 October 2022 and 16 November 2022. I am aware that this is not an application and that the school cannot apply on my behalf.

Signature of parent/carers: _____

THIS IS NOT AN APPLICATION FOR ENTRY TO A SELECTIVE HIGH SCHOOL.

This is a notice to your primary school only that you intend to apply.

TO APPLY GO TO THE ONLINE FORM AT: <https://education.nsw.gov.au/public-schools/selective-high-schools-and-opportunity-classes>

OFFICE NEWS

Collecting your children during the day – If you need to collect your child during the school day, simply come to the Office; we will contact your child's classroom and issue a leaving slip. We ask that you avoid collecting them during recess and lunchtimes as it is very difficult to locate children in the playground. **Please do not** arrive between 11.10–11.30am, and 1.00-1.50pm. Thank you for your cooperation.

SRC Iceblock fundraising – commences **tomorrow**, 21st October, gold coin donation requested.

Book Club – please note that orders for Issue 7 are **due by Monday 24 October**.

SUE LEECE
ADMIN MANAGER

P&C Meeting Invitation

Welcome to the last term of the school year! We look forward to a last term full of successful community events before we start plans for the new year.

Please join us on 25th Oct 2022, in the school library for:

- Guest Speaker Discussion - 7.30pm - 7.45pm - Ms Mandy Ryan will be giving a short presentation on New English and Mathematics Syllabus (K-2 2023 & 3-6 2024)
- P&C General Meeting 7.45pm - 8.30pm

Minutes from the last meeting and the agenda for this meeting will be attached closer to the meeting date. I request all communications, reports and requests to join the meeting to be sent to secretary@mowbraypandc.org.au

See you there!

June Banerjee

SCHOOL NEWS

Cyber Safety – Stage 2 and 3

We live in a highly-connected world and Australian students are spending more time online than ever before. Students' online experiences play a significant role in their social and emotional development, which is why cyber safety education is a focus for Stage 2 and 3 this term. On 25th October our local Police Youth Liaison Officers will be coming to talk to Stage 2 and 3 students about how to stay safe online.

Key focus areas will include:

- Digital Citizenship
- Social and emotional learning
- Specific risks
- Help-seeking



SCHOOL NEWS

Senior Choir - Festival of Choral Music

Thirty students across Years 4, 5 and 6 auditioned to become a part of the Senior Choir this year. These passionate students dedicated their lunch times to rehearse with Mrs Jefferies and Ms De Lorenzo. The repertoire consisted of 11 songs including new compositions and arrangements.

The Choir participated at the Festival of Choral Music concert at the Opera House along with 35 other school choirs, with students coming as far away as Mudgee to perform.

The evening was highly successful and we are very proud of the students' efforts.

- ***Mrs Janelle Jefferies***



SCHOOL NEWS

Mowbray Students represent at State Athletics

Congratulations to Maks M (5FV) and Zac C (6S) who competed at the NSW PSSA State Athletics Championships this week. Maks (pictured left) competed in Junior discus on Wednesday and Zac is competing in the Senior discus event today.



We are so proud to announce that Maks came 3rd and will be representing Mowbray at the National Championships in Brisbane in November!

We look forward to hearing Zac's news too – well done boys!

- Ms Marianne Power

SCHOOL NEWS

World's Greatest Shave

Thank you to everyone who supported me and made a donation to the World's Greatest Shave. It was such a fun experience for me to do; especially getting to do the shave at school. The support from students and teachers was very thoughtful and again, I thank everyone who donated any amount to me. We have such a great video of it, but here are some pictures.



I raised an incredible **\$2,160.99**, smashing my goal of \$520! All the money that was donated is for a great cause against shaving the world of leukemia.

- Owen (5FV)





Iceblocks!



Help our Sponsor Children by making a gold coin donation.



Mowbray's sponsorship makes a positive impact on these children's lives, helping them access education, health care, clean water and food.



Sun or no sun, celebrate the end of the week with a delicious iceblock! Money collected in class. SRCs will collect & hand out iceblocks.

Remember to put your rubbish in the bin!



ChildFund
Australia

This is an SRC fund raising initiative for
ChildFund Australia

*thank
you*



Thanks, Mowbray, for helping JAF

TO STOP PAIN & DISABILITY IN KIDS WITH ARTHRITIS



Our SRC pyjama day raised **\$804** for **point of diagnosis packs** to help children and their families when they are first diagnosed with juvenile arthritis. These packs help reduce the initial stress and fear families experience by providing trusted and relevant information.

About Juvenile Arthritis

Juvenile Arthritis (JA) is a serious, incurable autoimmune disease that causes inflammation of the joints and sometimes the eyes. JA affects 1-4 in 1,000 children. It is estimated that 80% of children with JA experience pain on a daily basis, which affects their school life and prevents them from participating in sport, play and social interaction.

About JAF

JAF is a national registered charity dedicated to addressing the needs of children and young people with juvenile arthritis and their families and carers.

JAF works to achieve its mission in three main ways i) by providing practical support to children with juvenile arthritis and their families ii) by advocating Federal, State and Territory Governments to provide better, more accessible services and iii) by raising funds for research and programs to help children with JA live their best possible lives.



For more information please visit – www.jafa.org.au

School Travel

Term 4 2022

2023 school travel applications are now open

Applications for student travel in 2023 open from **Monday 10 October 2022**.

Students who need a School Opal card or travel pass for 2023 can [apply](#) now. A new application will need to be submitted if they are applying for the first time, or if they are requesting an additional travel entitlement as a result of a new shared parental responsibility situation (e.g. joint custody).

Students who change address, school, campus location, have repeated a year or received an expiry notification from Transport for NSW for their school travel entitlement should [renew or update](#) their details before **the end of term 4**. This will ensure that schools can endorse applications, and entitlements remain valid for the start of the 2023 school year. School Opal card holders will have the changes applied to their existing card.

If a student's distance eligibility has changed based on their grade (i.e. grade two to grade three), the system will automatically update their entitlement if they meet the new criteria. If they do not meet the new [eligibility criteria](#), we will send an expiry notification via email.

Students who have an entitlement approved under a medical condition that is due to expire will receive a notification advising them to re-apply.

[Term Bus Pass](#) holders will receive a notification to re-apply.

Students in the Opal network applying for an Opal card (including a Term Bus Pass) for the first time will receive their Student Opal card at their nominated postal address. Cards will be mailed out from January 2023.

Students living in rural and regional (R&R) areas should receive their travel pass at the start of the new school year from their nominated transport operator. It may come via the school or be sent directly to them at home. **Note:** some R&R operators do not issue travel passes. Students/parents should confirm with their nominated operator if they do not receive a pass.

Travel from Term 1 2023

We ask that parents plan ahead and make sure their child knows which service/s to use and has a valid ticket to travel; either a School Opal card or Child/Youth Opal card (within Greater Sydney) or a School Travel Pass (outside Greater Sydney), from the start of the school year.

Applications for 2023 School Student Transport Scheme (SSTS) travel open at the start of Term 4 2022, so parents/students can [apply](#) or [update](#) details early and be ready for the start of the new school year.

Most students using the Opal network will not need a new Opal card and can continue travelling on their existing card each year.

The start of the year is a busy period for local transport operators, and students travelling without a valid ticket make service planning and operations difficult.

We recognise that for some families last minute changes to school enrolments mean they may not have a School Opal card or Travel Pass for the start of term. In the Opal network, we strongly encourage these families to have their children travel with a Child/Youth Opal card until they receive their valid School Opal card. If outside Greater Sydney, parents should contact their [local bus operator](#) to discuss their travel needs.

Bus operators are flexible and understanding, particularly at the start of the school year, and will ensure students can travel safely to and from school. But to best support our operators we encourage all students to have a valid ticket, as early as possible, from the start of the school year.

Students using School Opal cards are also reminded that they must tap on and tap off in line with the [Student code of conduct](#) and [Opal terms of use](#).



Further information can be found at transportnsw.info/travel-info/using-public-transport/school-travel

Enquiries can be submitted at transportnsw.info/contact-us/feedback/passes-concessions-feedback



Mowbray Public School Parents and Citizens Association Inc.

635 Mowbray Road, Lane Cove North NSW 2066
ABN 85 228 342 209

e: info@mowbraypandc.org.au w: mowbraypandc.org.au



Dear Mowbray Parents and Carers

As we head towards the end of the year, there are lots of fun activities to look forward to! October is a busy time – we welcome our 2023 Kindergarten families to Mowbray at a morning tea hosted by our current Kindergarten parents; we celebrate our Mowbray staff at the World Teacher's Day Lunch hosted by Mowbray families; we get to watch our singers, dancers and musicians at the Performing Arts Night and finish off the month with a spook-tacular Halloween Disco and Dress Up day. This year, we CELEBRATE MOWBRAY! on Saturday 10 December with carnival rides, food trucks, market stalls and a fantastic fireworks display! all Mowbray families, their friends and neighbours are encouraged to attend. Look out for more details in the coming weeks.

In other exciting news, the P&C has reached our target of \$50,000 towards the installation of the new play spaces with the exceptional amount of money raised by the Slime Spectacular. Thank you to those Mowbray families who participated in this fundraising event and those of you who have made financial contributions this year.

As a P&C, we work towards supporting the school to deliver the best possible outcomes for our children. This is not only by way of providing additional funding for projects, supplies and resources it's also through working with the school and organising events that encourage connection and community. We welcome you to participate in P&C events, activities and meetings. It's a great way to support your child's education, get to know other parents and to keep up to date with what is happening at the school. For more information about the P&C and how you can get involved, head to www.mowbraypandc.org.au or contact info@mowbraypandc.org.au. Look out for information and updates through your class parents, school stream or visit us in the Mowbray Public School Families & Friends Facebook group to get the latest news and join in related discussions.

Regards

Aly Richards

President – Mowbray Public School Parents and Citizens Association

P&C EVENTS & FUNDRAISERS - TERM 4

Week 3 – Tuesday 25 October, 7.30pm

P&C General Meeting

Week 3 – Wednesday 26 October, 9.30am

2023 Kindergarten Orientation Morning Tea (K only)

Week 3 – Friday 28 October, 1.00pm

World Teacher's Day Lunch

Week 4 – Monday 31 October

Halloween Disco & Dress Up Day

Week 5 – Saturday 12 & Sunday 13 November

Family Portrait Fundraiser

Week 8 – Tuesday 29 November, 7.30pm

P&C General Meeting

Week 9 – Saturday 10 December, 3.30pm

Celebrate Mowbray – Fun, Rides, Food & Fireworks!!

Week 10 – Thursday 15 December, 6.00pm

Year 6 Farewell (Yr6 only)



WORLD TEACHER'S DAY LUNCH

Friday 28 October, 1pm

Each year we show our appreciation for the teachers and staff at Mowbray Public School by putting on a lunch catered by parents and carers!

If you can help, please signup now..

SIGN ME UP
to help on
the day

SIGN ME UP
to bring
a dish

a fundraising event presented by
Mowbray Public School P&C Assoc.



HALLOWEEN

DISCO & Dress Up Day

Monday 31 October

DRESS UP



Come to school in
costume or mufti

DANCIN' TIME!



KINDY DISCO || 2.30pm – 3.10pm

(Kindergarten Disco is free of charge and does
not include any snacks. No RSVP required)

Year 1–6 Disco || 3.20 – 4.30pm

(includes DJ, hot popcorn & ice block)

TICKETS \$5 EACH

AVAILABLE NOW ON FLEXISCHOOLS



Mowbray Public School P&C invites you to...



CELEBRATE MOWBRAY 2022!

FIREWORKS! FOOD! STALLS! RIDES!
SATURDAY 10 DECEMBER 2022

Mowbray Public School, 635 Mowbray Rd, Lane Cove North

Rides 3.30pm – 7.30pm | Stalls & Activities 3.30pm – 6.30pm | Food trucks 3.30pm – 8.30pm | Fireworks 8.45pm (approx)

Big thanks to our sponsor:



Event supporters:



www.mowbraypandc.org.au/celebratemowbray/



CELEBRATE MOWBRAY 2022!

Saturday 10 December from 3pm



Stall Holders Wanted



Are you an artist or a crafter with products you'd like to sell? Do you have second hand goods you'd like to make some money from? Do you have a friend or family member who runs a market stall? We are looking for market stall holders with goods and services that are family friendly to attend Celebrate Mowbray 2022*.

You don't need to be a professional or established business to be a stall holder! Hobbyist stall holders are defined as those who are not running a formal commercial enterprise nor have an ABN and who earn under \$20,000 per year from their stall activity. Public Liability Insurance is available to Hobbyists for \$40.

Here are some ideas... Second Hand Clothes, Plants, Candles, Greeting Cards, Hair Braiding, Hair Accessories, Soaps, Pet Accessories, etc.

*Fees apply and all stall holders must have Public Liability Insurance. Please contact events@mowbraypandc.org.au for further information.

[CLICK HERE FOR MORE INFORMATION AND TO REGISTER YOUR INTEREST AS A STALL HOLDER](#)
or contact events@mowbraypandc.org.au

FAMILY PORTRAIT FUNDRAISER



The P&C is very excited to offer a Stine Baska Photography Family Photoshoot again in 2022 - Saturday 12 November and Sunday 13 November.

For a \$25 booking fee (100% donated to the school) participants will receive:

- Professional photographer
- 20 minute photo shoot
- One 8 x 12 photograph + digital file
- Option to purchase additional photos at a discounted price.

Stine Baska
photography
www.stinebaska.com

BOOK NOW

SPECIAL PRICE ONLY

\$25

per session

Information & reservation: [CLICK HERE](https://www.mowbraypandc.org.au) | events@mowbraypandc.org.au





5 & 6 NOVEMBER 2022 • SAT & SUN • 10AM - 4PM

Greenwich Village Arts Trail is on again!

A popular community event for all the family where you can see behind the studio door, chat to the artist - and buy directly from them. Celebrating its 10th year, there are a record 31 artists - paintings, sculptures, pottery, children's book illustrations, hand-printed textiles, photographs, jewellery and more. Local cafes and picnic spots available. Maps available at Greenwich local shops, FB, Insta or www.greenwichvillageartstrail.com

SCHOOL ZONE

Road Safety

News

Welcome!

In this edition we will share some bus safety tips for both drivers, parents and carers.

NSW has one of the largest bus fleets in Australia. Buses can't stop quickly because they are large and heavy vehicles, so it's worth remembering the following tips.

Useful driver tips

- Lights flash on buses to warn motorists that buses are picking up and dropping off passengers (often school children)
- Slow down to 40km/h when overtaking or passing a bus displaying flashing lights
- A driver can help keep children safe by:
 1. Sticking to the speed limit and following the road rules in school zones
 2. Slowing down to 40km/h when bus lights are flashing
 3. Looking out for children crossing the road near bus stops in school zones or along bus routes
 4. Giving way to buses when they merge back into the traffic



Useful parent and carer tips

Children are most at risk in the minutes after getting off the bus. Below are some ways you can help reduce this risk:

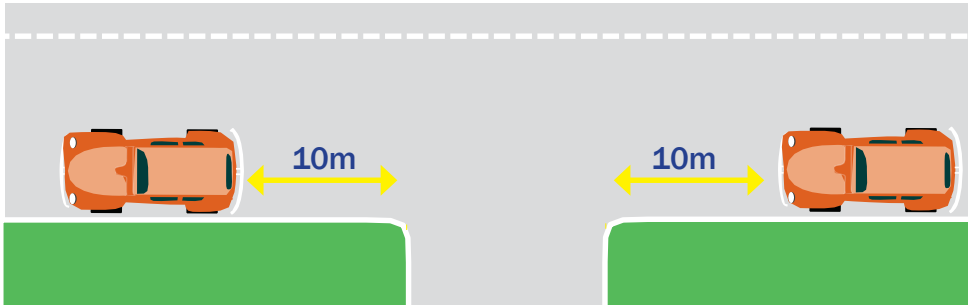
- Always drop off/pick up your child on the same side of the road as the bus stop (but not in the Bus Zone)
- Meet your child at the bus stop (remembering to stand back from the kerb)
- Wait until the bus has gone before choosing a safe place to cross the road



Parking Rules

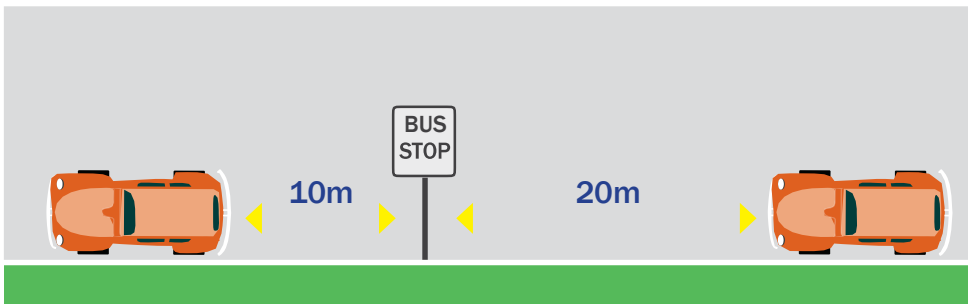
Please park safely and legally on the streets around your school. Park legally so you do not incur parking fines and demerit points. Council's Traffic Compliance Officers enforce parking around schools. If you park contrary to the road rules you will be fined!

You cannot stop or park your vehicle:



Within 10m of an intersecting road at an intersection without traffic lights (20m with traffic lights), unless a sign states you can park there (see image at left).

PENALTIES FROM: \$464
Demerit Points apply in School Zone

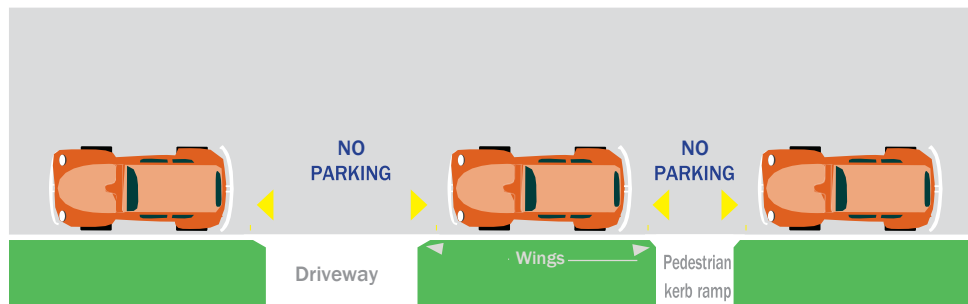


Within 20m before and 10m after a bus stop (see image)

PENALTIES FROM: \$349
Demerit Points apply in School Zone

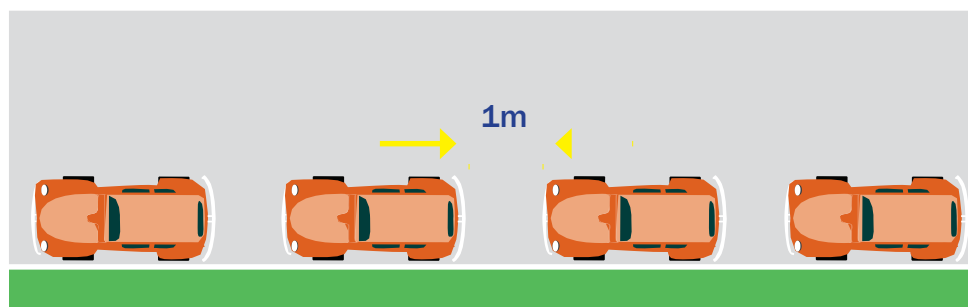
Parallel parking

This is the usual way to park unless signs tell you otherwise. You must park in the same direction as the adjacent traffic and parallel and as close as possible to the kerb.



You can NOT park across driveways or pedestrian kerb ramps. A vehicle can be parked up to the wings on the driveways or ramp (see image)

PENALTIES FROM: \$349
Demerit Points apply in School Zone



You should park at least one metre from any other parked vehicle and entirely within any marked parking lines where provided (see image)

PENALTIES FROM: \$116