

# MOWBRAY NEWS

Term 4 Week 4  
28 October 2021

## PRINCIPAL'S REPORT

### **We're ALL Back!!!**

A big WELCOME back to all our MPS students and families. It was fantastic how excited our children were to see each other on their arrival and in the classroom.

Although there are still restrictions in place, it is obvious that our students are making the very best of the situation, supporting each other and trying to follow our Covid-safe practices.

### **Thank You**

On behalf of all the MPS staff, I would again like to thank all our parents and carers for supporting our remote learning packages. This week we have supported the children writing a special *Thank You* to their families. Please check the school fence for your child's thank you/gratitude poster.



### **Returning late or not returning in 2022?**

Documentation of student movement is essential for the school executive to make 2022 classing structure decisions. Included in this newsletter is a form (that was also sent via School Stream) to inform the school if:

- your family will be taking extended leave over the December/January holidays and your child will be returning to school later than Tuesday 1 February 2022 (it is essential we have written documentation stating your proposed date of return) or
- your child in Kindergarten – Year 5 will not be returning to MPS in 2022

I would politely request that any families who fit into these categories please fill out the form included in this newsletter or complete the form electronically via School Stream.

Thank you for your support with our 2022 planning.

## PRINCIPAL'S REPORT

### 2022 classing

At the end of every year, teachers and executive staff put many hours into forming classes for the next year. Teachers take into account how children work, who children work best with and friendship factors. As a school community we need to remember that children are in class for the best possible education, and classroom teachers have a deep understanding of class dynamics and how the students in their classes work best.

If you are concerned that your child has significant special needs that your 2021 classroom teacher is unaware of, or there are significant extenuating circumstances that need to be taken into account in 2022 classing, you can contact me via email or phone before the 12 November.

Emails should be sent to [Mowbray-p.school@det.nsw.edu.au](mailto:Mowbray-p.school@det.nsw.edu.au) with the subject line 'Attention Principal re: 2022 classing' explaining your child's significant needs or extenuating circumstances. All emails will be treated confidentially.

Any requests made will be considered, but are **not** guaranteed. Any request sent through after the 12 November 2021 will not be able to be considered.

### Selective High School Application for 2023 – Year 5 students

If you would like to have your child considered for Year 7 selective high school entry in 2023, you need to apply online using a valid email address (not the student's email address).

Detailed instructions on how to apply online are available at <https://education.nsw.gov.au/public-schools/selective-high-schools-and-opportunity-classes/year-7>.

An intention to apply note with detailed information was handed to all Year 5 students in Week 4 of Term 4. It has also been included in this newsletter. This note is not an application. Applications need to be made online.

The application website opens at that link on 19 October 2021 and closes on 17 November 2021. You must apply before the closing date.

### Child Protection Lessons

A mandatory requirement of all schools is to teach child protection lessons every year as part of the PDHPE syllabus. These lessons are designed to inform students of their personal rights and how to keep themselves safe in many situations. During Term 4, all students will participate in child protection lessons on a weekly basis. There are three components to the lessons: **Recognising Abuse, Power in Relationships** and **Protective Strategies**.

**CAROLINE ALFORD - PRINCIPAL**

## PRINCIPAL'S REPORT

**CONGRATULATIONS to the following students who will receive the following Awards in class:**

### **K - 2 GOLD AWARDS**

KE	Scout E, Alexis L
KH	Aangie L, Valentin J
KPE	Charli D, Benjamin L, Ala Z
1F	Hugo Y, Xavier de B,
1HL	Heidi B-S
1T	Melis K, Kenzie M, Ismail B, William G
2D	Itay F P,
2M	Asher T, Olivia S
2S	Felix W, Emily F, Ema L

### **STAGE 2 GOLD AWARDS**

3A	Jacob N, Jackson Y
3M	James H, Adam E,
3T	Hugh G, Kaylah P
4B	Jack L
4L	Fiona L, Keira D

### **STAGE 3 GOLD AWARDS**

5BF	Akina M, Mais M
5/6K	Sophie B
6H	Zak E



**MOWBRAY**  
PUBLIC SCHOOL

## Leaving the school in 2021 or Arriving late in 2022?

Dear Parents/carers,

The first day of school for Year 1 – 6 students next year will be **Tuesday 1 February, 2022**. Kindergarten students will be starting on Friday 4 February at 9:30am.

It is vital, for class and staff organisation purposes, that we know if your child/children will not be returning to Mowbray PS or be returning late (after 1 February) next year. Some families take extended holidays in January/February and we need to know your return date so your child's enrolment can be counted.

This note does not apply to any 2021 Year 6 students.

**Please return this note to the office as soon as possible**

---

### Not returning in 2022

Name	Class

Arrangement or if moving - new school name \_\_\_\_\_

Signed \_\_\_\_\_ (parent/carer) Date: \_\_\_\_\_

---

### Returning later than 1 February in 2022

Name	2021 class	Expected return date

Reason for late return \_\_\_\_\_

---

Signed \_\_\_\_\_ (parent/carer) Date: \_\_\_\_\_



# School Travel for 2022



---

## 2022 school travel applications are now open

Students who need a School Opal card or travel pass for 2022 can [apply](#) now. A new application will need to be submitted if they are applying for a school travel pass for the first time, or if they are requesting an additional travel entitlement as a result of a new shared parental responsibility situation (e.g. joint custody).

Students who change address, school, campus location, or who have repeated a year or received an expiry notification from Transport for NSW for their school travel entitlement should [renew or update](#) their details before **the end of term 4**. This will ensure that schools can endorse applications and current entitlements are updated and remain valid. School Opal card holders will have the changes applied to their existing card.

If a student's distance eligibility has changed based on their grade the system will automatically update their entitlement if they meet the new criteria. If they do not meet the new [eligibility criteria](#), they will receive an expiry notification via email.

Students who have an entitlement approved under a medical condition that is due to expire will receive a notification advising them to re-apply.

[Term Bus Pass](#) holders will receive a notification to re-apply.

Students in the Opal network applying for an Opal card (including a Term Bus Pass) for the first time will receive their Student Opal card at their nominated postal address. Cards will be mailed out from January 2022.

Students living in rural and regional (R&R) areas should receive their travel pass at the start of the new school year from their nominated transport operator. It may come via the school or be sent directly to them at home. **Note:** some R&R operators do not issue travel passes. Students/parents should confirm with their nominated operator if they do not receive a pass.

## School Student Transport Scheme site change

On 1 October 2021 the School Student Transport Scheme (SSTS) information and application portal was moved to **transportnsw.info**. This will assist families to find all their travel information in the one place.

### Travel from Term 1 2022

We ask that parents plan ahead and make sure their child knows which service/s to use and has a valid ticket to travel; either a School Opal card or Child/Youth Opal card (within Greater Sydney) or a School Travel Pass (outside Greater Sydney), from the start of the school year.

Applications for the School Student Transport Scheme (SSTS) open at the start of Term 4 2021 for travel in 2022, so parents/students can [apply](#) or [update](#) details early and be ready for the start of the new school year.

Most students using the Opal network will not need a new Opal card and can continue travelling on their existing card each year.

The start of the year is a difficult period for local bus operators, and students travelling without a valid ticket make service planning and operations increasingly difficult.

We recognise that for some families last minute changes to school enrolments mean they may not have a School Opal card or Travel Pass for the start of term. In the Opal network, we strongly encourage these families to have their children travel on a Child/Youth Opal card until they receive their valid School Opal card. If outside Greater Sydney, parents should contact their [local bus operator](#) to discuss their travel needs.

Bus operators are flexible and understanding, particularly at the start of the school year, and will ensure students can travel safely to and from school. But to best support our operators we encourage all students to have a valid ticket, as early as possible, from the start of the school year.

Please also remember that students using Opal cards must tap on and tap off in line with the [Student code of conduct](#) and [Opal terms of use](#).



Further information can be found at [transportnsw.info/travel-info/using-public-transport/school-travel](https://transportnsw.info/travel-info/using-public-transport/school-travel)

Enquiries can be submitted at [transportnsw.info/contact-us/feedback/passes-concessions-feedback](https://transportnsw.info/contact-us/feedback/passes-concessions-feedback)



Please see band instruments on offer presented by our current band students...

[Flute](#)

[Clarinet](#)

[Saxophone](#)

[Trumpet](#)

[Trombone](#)

[Euphonium](#)

[Bass Guitar](#)

We are very excited to announce that students currently in **Years 2 and above** will have the opportunity to join Mowbray Band in 2022, with recruitment starting soon. No previous musical experience required.

Band rehearsals take place weekly one morning per week before school (currently Thursdays), and we connect you with experienced music tutors to help your child learn their instrument. As presented above we have a range of instruments available for hire.

**Register your interest to join Band from Week 5 (Monday 1<sup>st</sup> November) via the Portal link below, click on New Student Registration**

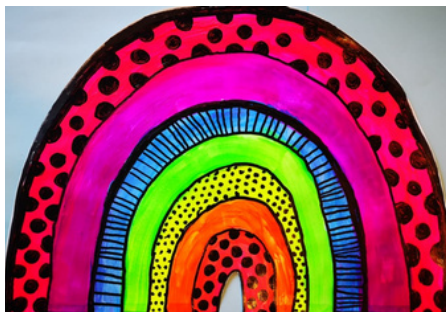
**<https://portal.msmusic.com.au/mowbrayband>**

Once we are allowed on school grounds, we will hold instrument presentation sessions, details will be posted on Mowbray FB page and School Stream. In the meantime, please do not hesitate to contact us via [mowbrayband@gmail.com](mailto:mowbrayband@gmail.com)

# MOWBRAY PUBLIC SCHOOL P&C *Picks!*



e [info@mowbraypandc.org.au](mailto:info@mowbraypandc.org.au) w [www.mowbraypandc.org.au](http://www.mowbraypandc.org.au)  
fb group [www.facebook.com/groups/MPSFF](https://www.facebook.com/groups/MPSFF) ig [@mowbrayfamiliesandfriends](https://www.instagram.com/mowbrayfamiliesandfriends)



## THANKS

Thanks to our Mowbray parents, carers, teachers, staff, kids and pets for doing a great job with **Home-Based Learning** or continuing with essential work, to help protect us all!

Fingers cross it all goes to plan and we can continue happily. **Welcome Rainbow** by Sophie W (Year 6)



## NEW OUTDOOR QUIET PLAY

Thanks to **Stella Wu**, who applied and successfully won a \$500 Australia Post staff Community Grant! Ms Alford selected a fabulous giant **Connect Four** game (with extra, spare parts!) for kids who like their play a little bit quieter ...

Thanks Stella. We love our Mowbray community.

## COMING UP



## YEAR 6 FAREWELL

Thanks to our Year 5 parents/carers who have taken up the challenge to prepare the Year 6 Farewell (**Thursday, 9 December**). It's a lovely tradition at Mowbray and a favourite event for kids, in their last term of Primary School. Photo from the new-style 2020 event, including Bop Til You Drop entertainer.

Thanks. We will miss you all.

## COLOUR EXPLOSION

It's getting closer! The Colour Explosion is coming up on **Friday, 10 December**.

The most fun our kids will have this year! Please set up your fundraising accounts, get your white commemorative shirt and wait to be covered in the colourful, powdery fun.



## BAND & STRINGS

Keep your eyes open for opportunities to join both **Mowbray Band** and **Mowbray Strings** in 2022!

We hope to be bigger and even better in 2022.  
[www.mowbraypandc.org.au/band/](http://www.mowbraypandc.org.au/band/)  
[www.mowbraypandc.org.au/strings/](http://www.mowbraypandc.org.au/strings/)





# THANK YOU



Thanks to **Stella W**, who applied for and was awarded a \$500 staff **Australia Post Community Grant**. She contacted the P&C with an idea that this grant could benefit our wonderful school and our kids.

So glad she thought of us!

Ms Alford wanted a 'quiet play' item for kids who liked their lunchtimes a little less 'loud'. This giant outdoor **Connect Four** game is perfect. (We also managed to buy some spare parts which, as parents/carers, you can understand why ...)

**We love our Mowbray community.**

In this photo, Ms Alford, Dymond (5BF) and Abbigale (3M) and Stella W.





GET READY FOR THE FUN AND THE COLOUR!

Friday 10 Dec  
2021



Mowbray Public School P&C Association

# COLOUR EXPLOSION 2021

Supported by  
Creative Endeavors

CREATE YOUR FUNDRAISING PROFILE



Go to

[www.plantadifference.com.au](http://www.plantadifference.com.au)

to create your child's profile  
page and start  
sharing!

FUNDRAISING LEADERBOARD

**\$7,920**

raised so far

1st



Natasha S

2nd



Noah D

3rd



Liam D

3rd



Xavier D

**3T is in the lead!**

COLOUR EXPLOSION T-SHIRTS



available now on [flexischools.com.au](http://flexischools.com.au)



## COLOUR EXPLOSION

a fundraiser presented by the  
Mowbray Public School P&C Assoc.

[www.mowbraypandc.org.au/colourexpllosion/](http://www.mowbraypandc.org.au/colourexpllosion/)



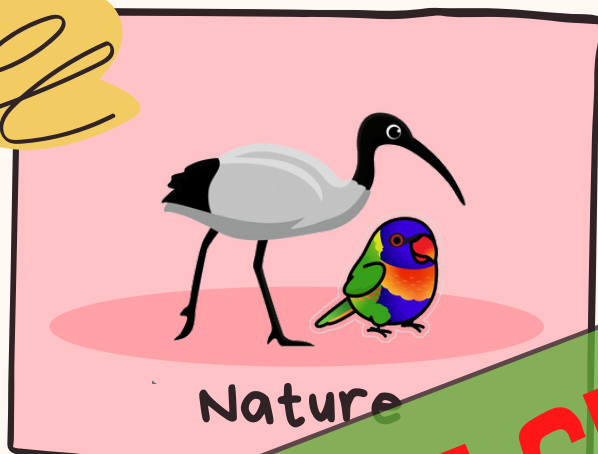
# BACK TO MOWBRAY

One prize per Year!

## ART COMPETITION

Prizes donated by  
**Cobden Hayson.**

Draw, paint, collage etc what makes YOU happy about returning to Mowbray after Lockdown! Get creative!



Email artwork to [mowbraymemo@gmail.com](mailto:mowbraymemo@gmail.com) with name and class by Sunday 31 October  
Art will be displayed in School Library windows and Facebook @MPSFFPage  
More information in School Stream. Prize for each Year winner.



# Placement in selective high schools for Year 7 entry in **2023**

## Information for applicants

Thinking of applying for a government selective high school for Year 7 in 2023?

You must apply online at:

<https://education.nsw.gov.au/public-schools/selective-high-schools-and-opportunity-classes/year-7>



### Key Dates

Application website opens:  
**19 October 2021**

Application website closes:  
**17 November 2021**  
You must apply before this date.

Test centre and test authority advice released:  
**24 February 2022**

Selective High School placement test:  
**10 March 2022**

Placement outcome expected to be released:  
**8 July 2022**

Please read this booklet carefully before applying.

---

There may be changes to the procedures in this document.

Check the website at [education.nsw.gov.au/shs-oc](https://education.nsw.gov.au/shs-oc) regularly for updates throughout the application and placement process.

---

Please check the website for information before you contact the Team.

**After applying, you will be able to log into your application dashboard to change details and send and receive messages.**

The Selective High Schools placement process for Year 7 entry is administered by the High Performing Students Team. It is referred to as 'the Team' in this document.

#### Contact Details:

High Performing Students Team, NSW Department of Education

Email: [ssu@det.nsw.edu.au](mailto:ssu@det.nsw.edu.au)

Telephone: 1300 880 367

Facebook: <https://www.facebook.com/groups/772251106301086/>



---

Information is subject to change throughout 2022 because COVID-19 restrictions may affect timing and processes.

Any changes will be published on the website <https://education.nsw.gov.au/public-schools/selective-high-schools-and-opportunity-classes/year-7> as they are confirmed. Applicants will be also be advised directly of major changes to the test or due dates.

In the online application form you will see a privacy notice. It has details of how personal information will be used and disclosed. You will be asked to read the privacy notice and consent to the specific uses of personal information when you apply.

## Contacts

As soon as you submit your application you can contact the High Performing Students Team by logging into your application dashboard to send and receive messages and upload documents.

If you have not yet submitted an application you can contact the Team by:

- emailing: [ssu@det.nsw.edu.au](mailto:ssu@det.nsw.edu.au)
- phoning: 1300 880 367. The phone system has updates at key stages of placement.
- logging into Facebook and requesting approval to join this Facebook group:  
<https://www.facebook.com/groups/772251106301086/>.

If you need translated information, use Microsoft Edge and open our website, then right click to access translations.

---

Stages of the placement process	
Parents register, verify email, log in and then complete and submit the application online	From 19 October to 17 November 2021
Parents request reasonable adjustments for disability when applying, and upload documentation	From 19 October to 17 November 2021
Principals provide information about applicants from their school	From 19 November to 1 December 2021
Parents verify the primary school the student will attend in 2022	Late January 2022
Parents are sent test centre information and the 'Test authority'	On 24 February 2022
Students sit the Selective High School Placement Test for entry to Year 7 in 2023.  'Report of academic merit' due for interstate or overseas students	On 10 March 2022
Requests for special consideration for Illness/misadventure are submitted	By 17 March 2022
Last day to change selective high school choices	24 April 2022
School selection committees meet	In May and June 2022
Placement outcome expected	8 July 2022
Parents can submit Results enquiries	5 working days after outcomes release, mid-July 2022
Parents can submit appeals	15 working days after outcomes release, late-July 2022
Parents accept or decline offers	From July 2022 to at least the end of Term 1 2023
Appeals outcomes are sent to parents who appealed	Early-October 2022
Names of students who have accepted offers are withdrawn from any higher choice school reserve lists they may be on	At 3:00pm on 14 December 2022

## What are selective high schools?

Selective high schools cater for intellectually gifted students who may otherwise be without sufficient classmates of their own academic standard. Selective high schools help these students to learn by grouping them with students of similar ability and using specialised teaching methods to support the learning needs of gifted students.

Year 7 enrolments are available at:

- seventeen fully selective high schools
- twenty-five partially selective high schools
- four agricultural high schools, three of which have boarding places where students live at the school for the school term. Find out more at: <https://education.nsw.gov.au/public-schools/selective-high-schools-and-opportunity-classes/year-7/information-for-applicants/agricultural-high-schools>
- one virtual secondary school, Aurora College, for students in rural and remote areas. Find out more at: <http://www.aurora.nsw.edu.au/>.

See a list of selective high schools and their websites at the end of this document. A map is also available at: <http://www.maptive.com/ver3/Selective>.

Find more information about catering for academically gifted students with high potential in NSW at: <https://education.nsw.gov.au/teaching-and-learning/high-potential-and-gifted-education/>.

## Fees

There are no extra fees for attending a selective high school, unless your child is a boarder. Schools may ask for contributions towards the cost of materials for some subjects, as do other government high schools.

## Who can apply?

Parents of students enrolled in NSW government and non-government primary schools and home schools can apply.

Parents of students currently interstate or overseas can apply if they expect to meet residency requirements by the time offers are made and to live in NSW by the start of Term 1 2023.

Parents of Aboriginal students are encouraged to apply for selective high school placement.

For further information and support, parents can speak with their child's current principal, or contact their local Aboriginal Education and Wellbeing Advisor.

## Age and school Year

Students are usually in Year 5 at the time of applying (2021) and in Year 6 when sitting the test (2022). They are usually born between 1 January 2010 and 1 August 2011. These students will be aged between 11 years and 5 months and 13 years at the time they start Year 7. If your child is out of the age range or in another school Year when you apply, the online application will prompt you to explain why you want your child to skip or repeat a Year. Selection committees will carefully check the reasons you give. They may ask for more information or for an interview, if the child is very young, to determine whether there are special requirements the school can provide.

Selection committees may:

- decide not to accept students who are much older than the usual age range, as above
- consider that students doing the test for a second time have gained an unfair advantage from their previous experience with the test
- decide not to accept students who will be in Year 7 in 2022 and who are seeking to repeat Year 7 in a selective high school
- require evidence of consultation with the school principal if seeking acceleration from Year 5 in 2022 to Year 7 in 2023. In such cases the students must gain a score which places them in the top half of the students qualifying for placement in the selective high school.

## Siblings

Placement in selective high schools is based on academic merit, so the placement of one twin or triplet does not guarantee the placement of another. Siblings of twins or triplets will be offered a place at the same selective high school only if they have scores that are high enough to qualify. However, selection committees for boarders can give priority to students who have siblings currently attending the same school.

Where older or younger siblings of students placed in a partially selective high school are not in the catchment area for that school, parents may apply directly to the school for out-of-area enrolment at that school. There is no guarantee that their application for out-of-area enrolment of siblings will be successful.

## Residency status

Your child must be a permanent resident of Australia or a citizen of Australia or New Zealand to enrol in a selective high school. You can apply if your child is not yet a permanent resident but you expect permanent residency will be granted before initial offers are made in early July 2022.

Your child can also sit the test. However, even if your child qualifies on academic grounds, you will not be offered a place in a selective high school unless permanent residency has been granted.

You must be living in NSW at the beginning of the school year of entry to a selective high school.

Offers will be cancelled if based on false or misleading information.

## Interstate or overseas

You can apply while you are temporarily interstate or overseas. If possible, your child should be in NSW to sit the test.

If your child is unable to sit the test in NSW you will need to submit a Report of academic merit which includes a WISC V or Stanford Binet V IQ report, standardised tests of English and mathematics and a writing sample. The report is due on the day of the test.

Refer to: <https://education.nsw.gov.au/public-schools/selective-high-schools-and-opportunity-classes/year-7/information-for-applicants/interstate-and-overseas-applicants>.

Applicants do **not** need to supply school reports or assessments from their primary schools.

## Boarders

There are three agricultural high schools with places for boarders, where students live at the school during the school term.

If you want your child to be considered for boarder placement you should select the boarder option, not the day option, and accurately complete the details about distance and travel times on the online application form. The boarder selection committees give higher priority to applicants who live in isolated areas than to applicants who live in other country areas and cities.

If your child is offered a boarder place you will be asked to sign the school's 'Residential student agreement' to pay boarder fees on time. The school will also ask for medical information.

There is financial support available that may help you to pay the boarder fees. Further information is available at: <https://education.nsw.gov.au/public-schools/selective-high-schools-and-opportunity-classes/year-7/information-for-applicants/agricultural-high-schools>.

If your child gains a boarder place at an agricultural high school that also has day students and you want your child to change from a boarder place to a day place or vice versa, you can apply through the Years 8 to 12 process. This process is explained at: <https://education.nsw.gov.au/public-schools/selective-high-schools-and-opportunity-classes/years-8-to-12>.

## Rural and remote

You may wish to apply for Aurora College 'virtual' selective classes if you intend to enrol your child at a non-selective government high school in a rural area.

Students attend their local government secondary schools (host schools) and join the selective stream in English, mathematics and science using an online conferencing system. Students connect with their teachers and other students through a virtual learning environment and residential school programs.

Aurora College is not available to students who will be enrolled in a rural high school which already has a selective class.

Find out more about Aurora College at: <http://www.aurora.nsw.edu.au/>.

## How do I apply?

Applications are open from **19 October 2021 to 17 November 2021**.

Parents must apply using the online application form.

Find the link to the form at:

<https://education.nsw.gov.au/public-schools/selective-high-schools-and-opportunity-classes/year-7/application-process>.

To apply:

1. Go to the application site and register your details using your own name and email address, not one belonging to your child. You will receive an email to verify your registration.
2. Go to the application and log in using the email address and the password you provided.
3. You will receive an application number in the format S22123456. Quote this number when making enquiries.
4. Complete the application and submit it when it is completed, checked and the declaration boxes have been ticked.
5. Upload any required documents if relevant, such as medical reports to support a request for reasonable adjustments for the test.
6. Receive an email confirming that you have successfully submitted your application.
7. Log in to your application to check all details are accurate and to add documents, make changes or send and receive messages to and from the Team.

You should apply once only for the same student. Duplicate applications will be deleted.

Late applications may be approved only in serious and well documented extenuating circumstances or where a school may be short of suitable candidates.

## Parent details

If possible, provide a second email address. Keep your contact details up-to-date by logging in to your application using the email address you registered and the password you used to apply.

### Where parents live at the same address as the student

Record the details of other parents in the application if they are likely to contact the Team or if they are entitled to make decisions on behalf of the child.

### Where parents live at different addresses

If parents do not live together, but have equal shared responsibility for the care and welfare of the student, the parent who lives at the same address as the child for most of the time should submit the application.

If the student lives with each parent for equal time, the parent with whom the child is staying at the time should apply. Additional parents can be added to the application and can ask to receive information about the child's application. **Please do not submit two different applications for the same child.**

The Team will not participate in parental disputes. The Team will accept decisions about school choices and placement made by the parent who applied, unless there are court orders stating otherwise.

Where parents cannot agree, the matter will be dealt with according to the Department's guidelines for dealing with family law related issues. For more information, refer to: <https://education.nsw.gov.au/about-us/rights-and-accountability/legal-issues-bulletins/family-law-guidelines>.

## Changes to the application

It is your responsibility to check and correct or make changes to your application if required. Log in to your application dashboard to check all details are accurate and to add documents or make changes. Some changes, such as requests for adjustments for disability, changes of school choice, submission of illness/misadventure requests and appeals, will be restricted to certain dates.

## Applying without internet access

If you have no internet access at home please seek the assistance of your child's school to facilitate your application. If you have a disability that prevents you from using a computer, please contact the Team for assistance.

The option to receive mail only is not available in 2021 and 2022 as postal services are disrupted. If you cannot access email regularly, please ask a friend, a family member or your child's school to assist, or contact the Team.



## Supporting documents

Please ensure you upload copies of the following supporting documents to your application at the time of applying or as soon as possible afterwards if any of these apply to your child:

- information about a disability, including medical or behavioural conditions such as blindness or low vision, diabetes, anaphylaxis, autism, learning difficulties or serious illness. If you believe your child requires reasonable adjustments for the test, you may need to provide diagnostic evidence. Find further information at:  
<https://education.nsw.gov.au/public-schools/selective-high-schools-and-opportunity-classes/year-7/application-process/special-test-provisions>.
- a copy of court orders if they relate to this child's education or communication about the child
- an explanation of why the child is older or younger than the usual age range for Year 7, or if he or she is not in Year 6 in 2022
- supporting information from the school if intending to repeat the student in Year 7
- a 'Report of academic merit', required for interstate or overseas students who are not sitting the test in NSW. This report must include a full WISC V IQ report or Stanford Binet V IQ report with a reliable full-scale IQ score, standardised reading and mathematics test results and a writing sample. The form to use for sending these can be found at:  
<https://education.nsw.gov.au/public-schools/selective-high-schools-and-opportunity-classes/year-7/information-for-applicants/interstate-and-overseas-applicants>
- evidence of previous schooling for students who have been doing most school work in the English language for less than 48 months (if requested).

The Team may need to confirm your child's Aboriginal background if school records do not confirm it. Find information about confirming Aboriginality at:  
<https://aiatsis.gov.au/research/finding-your-family/before-you-start/proof-aboriginality>.

You should not send school reports or certificates or other test results unless asked to do so.

## How should I choose selective high schools?

You can apply for up to three selective high schools in the order you prefer. Think about your choices carefully. List only the schools you would like your child to attend and in your preferred order.

Offers are made on the basis of your order of choice. Where students qualify for two or three schools, they will be offered only the highest choice for which they qualify.

Schools do not select students based on whether their school was chosen first or not. Selections for each school are based on the academic merit of the applicants for that school.

Make sure that all the schools you choose are suitable for your child and that travel times are reasonable. You can see where each selective high school is located by referring to the map at:

<http://www.maptive.com/ver3/Selective>.

You can also learn more about individual schools via the websites listed at the end of this document. Boarder school selection committees consider how far away you live but all other selection committees do not consider your child's travel times or transport needs.

Find out more about school choices at:

<https://education.nsw.gov.au/public-schools/selective-high-schools-and-opportunity-classes/year-7/information-for-applicants/choosing-a-selective-school>.

## Change of school choice

You can change your school choices before **24 April 2022** by logging into your application. You cannot change choices after 24 April 2021 unless there are serious extenuating circumstances, for which you must have documentary evidence. A request for a change of choice after 24 April must be approved by the Team.

You should request a late change of choice only if you have strong and documented extenuating circumstances. It is not usually possible to approve a change of choice after the outcome as places will be filled and reserve lists created. Requests to change school choices after the outcome would not be approved if made on the basis that your child might have qualified for a different school or because you have changed your mind about the order of choices.

### Transfer

After enrolment in a selective high school, you cannot transfer to another selective high school. You may, however, apply for your child to enter another selective high school starting in Years 8 to 12 by using the application form for Years 8 to 12 entry. This form will be published on the Team's website in late June of the year before entry. Find out about the process at:  
<https://education.nsw.gov.au/public-schools/selective-high-schools-and-opportunity-classes/years-8-to-12> and visit the websites of selective high schools.

## How are students ranked for selective high school entry?

For placement in 2023, students will be placed in order of academic merit based on the results of the Selective High School Placement Test.

For some applicants, other evidence of academic merit may be used in the placement process. For example, interstate and overseas applicants who are not able to be in NSW for the placement test submit a Report of academic merit that includes an IQ report.

### School information

For placement in 2023 it will not be possible to obtain school assessment scores from primary schools. Information about reasonable adjustments for disability and special considerations will be requested from applicants' primary school principals.

NSW Government school principals enter the information online.

#### *NSW non-government schools*

If your child is at a NSW non-government school a 'Principal's page for provision of information about the application' is emailed to you as soon as you submit your application. You must give it to the school within seven days of applying so the principal can supply the information to the Team by 1 December 2021.

## What do I need to know about the test?

The Selective High School Placement Test for entry to Year 7 in 2023 is expected to be held on the morning of **10 March 2022** in designated test centres in NSW. If the test date or location is changed due to NSW Health advice we will notify parents of new arrangements individually.

The test in 2022 is expected to be paper-based. All test materials are kept secure before the test.

The test has multiple-choice questions in reading, mathematical reasoning and thinking skills as well as a test of writing.

The test is designed to measure ability rather than performance on the curriculum.

### Authority to sit the test

By **24 February 2022** you will be sent a 'Test authority' letter that tells you where to take your child to sit the test.

Your child must take the Test authority letter to the test.

You will also receive a document 'Test information for parents and students'.

This provides details about the test and what your child should bring. It also tells students how to show answers.

Students from the same primary school will usually attend the same test centre. It is usually not possible to change test centres after they are allocated.

You must arrange for your child's travel to and from the test centre.

### Malpractice

The department has added robust measures to identify student malpractice for the Selective High School Test. These new measures are to ensure that no student receives an unfair advantage, or causes disadvantage to other students. Find out more about malpractice at <https://education.nsw.gov.au/public-schools/selective-high-schools-and-opportunity-classes/year-7/the-test/malpractice>. If malpractice is found, parents are notified and are given an opportunity to appeal the decision. If the decision is upheld, scores are not released and students are not eligible for placement.

### Practice tests

Practice questions for the new test are published at <https://education.nsw.gov.au/public-schools/selective-high-schools-and-opportunity-classes/year-7/the-test>. Encourage your child to practise answering the questions on the sample answer sheet.

The samples are intended to allow students to become familiar with the test format and style of questions. Any results may not reflect the score your child will get in the actual test. Selection committees will not make any decisions based on your child's score on practice items or any other unauthorised tests.

### Reasonable adjustments for disability

Reasonable adjustments are practical arrangements designed to support students to make a fair attempt to show their ability under test conditions, in accordance with the national Disability Standards for Education 2005.

On the application form, parents must disclose information about a child's disability, including a medical or behavioural condition that could affect his or her safety or performance during the test, could cause disruption to the test or that might require a life-saving response.

Ask for reasonable adjustments when you apply.

Information that parents and schools provide about disabilities is used for approving reasonable adjustments for the test.

The Team sends advice to principals and invigilators in test centres to ensure the adjustments are implemented.

Selection committees consider students with disabilities and whether the adjustments were available to them during the test.

Information parents provide about disability cannot be used to restrict access to selective high school placement in any way.

If you believe your child requires reasonable adjustments for the test you will need to explain your child's needs in detail in the application form (such as exact font size if requesting large print) and upload diagnostic evidence and other relevant documents to your application. You can also add supporting documentation as soon as possible after submitting your application.

The Team may contact you and/or the school to confirm the adjustments the student has at school. In many cases, if the requested adjustments are already provided at school, the Team can arrange for these in the test. This may include adjustments such as large print test papers, extra time, specific seating and approval to take medications into the test room.

You do not need to arrange permission for your child to bring glasses or asthma medication. Students should bring these to the test if required.

It is vital that parents let the Team know about any medical condition that may affect their child's safety in the test so appropriate adjustments can be approved.

Please advise us if your child has a disability that could possibly result in disturbance to other students during the test. Separate supervision for testing may be arranged if necessary.

Any reasonable adjustments granted to students will be confirmed along with test authority letters sent on 24 February 2022.

The Team tries to assist in emergency situations (e.g. a broken arm just prior to the test). However, some adjustments may not be able to be arranged after the application closing date.

## What happens if something goes wrong?

If your child sits the test but is sick or injured or an event affects performance on the test, you must get a medical certificate or other evidence for the test day.

To make a request for special consideration of illness/misadventure affecting test performance, log in to your application dashboard **by 17 March 2022** to submit the request including a file containing relevant evidence.

The link to the application dashboard is on our website at: <https://education.nsw.gov.au/public-schools/selective-high-schools-and-opportunity-classes/year-7/the-test/illness-or-misadventure>.

Depending on the circumstances, it may be better for the student to sit the test and make an illness/misadventure request afterwards. However, students **must not** attend the test if there is a risk to their health or the health of others, such as in cases of contact with contagious disease. Students with signs of respiratory illness will not be admitted.

## If the student is unable to sit the test

If your child was prevented from sitting the test for a good reason you can make a request for special consideration of illness/misadventure based on missing the test.

You will need to have a medical certificate or other evidence to support the request that covers the test day.

To make a request for special consideration of illness/misadventure based on missing the test you will need log in to your application dashboard to submit the request **by 17 March 2022**. Selection committees may then request alternative evidence of academic merit.

The link to the application dashboard is on our website at: <https://education.nsw.gov.au/public-schools/selective-high-schools-and-opportunity-classes/year-7/the-test/illness-or-misadventure>.

**You cannot make an appeal later about illness or misadventure that should have been raised at the time of the test.**

## How are decisions made?

All school selection committees make placement decisions independently, using consistent selection criteria.

Selection committees for each school consider all applicants for the school based on the order of calculated placement scores.

They consider:

- how many students to place on reserve lists
- the likely impact of any disability and reasonable adjustments on test performance
- illness/misadventure requests
- whether to accept late applications
- giving priority to isolated students who apply for boarding at agricultural high schools
- reasons for students being outside the usual age range or school year
- students of Aboriginal background or students who have been educated in English for less than 48 months

- other evidence of academic merit, if necessary
- students to be listed for offers and reserve places according to the number of vacancies at the school
- any other relevant factors brought to their attention.

## How do I find out the outcome?

The Team expects to release your child's placement outcome on **8 July 2022**. Your child may be:

- offered a place for one school choice, and/or
- placed on a reserve list for one or more school choices and/or
- unsuccessful for one or more school choices.

If your child is offered a place at one school and also had a score high enough to be offered a place at your second choice school, the second choice school is shown as 'not applicable'. In most cases the outcome information will show your child's calculated placement score.

If you receive an offer or a reserve place you will have access to an 'Outcome information' bulletin. This explains the terms used and the next steps in the process.

Parents of students found to have engaged in malpractice will be informed prior to the release of placement outcomes.

Parents of students absent from the test and who did not submit an illness/misadventure request will be informed that their child is not eligible for placement.

If you have not received advice about the placement outcome by **11 July 2022**, please contact the Team.

There is no minimum fixed score required for entry to individual schools. Students are offered placements according to the available vacancies and based on their ranking in the order of merit list.

The Team sends reports to government primary schools listing the outcome for students who applied.

## Responding to offers

If you receive an offer, please ensure you respond to the offer, accepting or declining, by the due date. If you do not respond by the due date the Team will send a message reminding you to respond. If you fail to respond after this reminder the offer will be cancelled.

If you accept an offer and then change your mind and want to decline it, you should send a message to the Team immediately so that the place can be offered to another student.

If you will have no internet access when offers are made, you can advise the Team in writing that you wish to accept any offer in advance.

## Being on a reserve list only

If your child is on a reserve list (or lists) only, you will not need to respond unless you wish to withdraw your child from the list.

A student remaining on a reserve list will be offered a place if his or her position on the list is reached.

The Team will continue to make offers, if vacancies arise, until at least the end of Term 1 in the year of placement. After this time, vacancies may be kept for the Years 8 to 12 placement process in June.

You can follow the progress of the reserve lists from early August 2022 at:

<https://education.nsw.gov.au/public-schools/selective-high-schools-and-opportunity-classes/year-7/outcome/year-7-reserves>.

## Subsequent offers

Your child can have an offer and also be on reserve lists for one or more of your higher choice schools.

If you get a subsequent offer to a higher choice school, you must either accept or decline the new offer. If you accept the new offer, the original offer is automatically declined. If your child is on any reserve lists, the Team will make further offers to your higher choice schools even if you declined an offer to a lower choice school.

If you accept an offer and your child is also on a reserve list, the student can also remain on the reserve list until **3pm on 14 December 2022**. At that time you must give up either the reserve place or the offer. After this time, students whose parents have not declined their offer will be automatically removed from all higher reserve lists.

## Can I find out more about my child's scores?

The calculated placement score is out of 120 marks. For details about scoring, please visit:

<https://education.nsw.gov.au/public-schools/selective-high-schools-and-opportunity-classes/year-7/selection-process>.

## Results enquiry

If you believe there was an error with your child's test scores you can submit a Results enquiry within 5 working days of the outcome release.

The link to the Results enquiry online form is in your outcome letter or in the Outcome information bulletin and is in your application dashboard.



The outcome of the results enquiry will be sent to parents within ten days of closing. The decision can then be appealed by the due date for submission of appeals.

### How do I appeal?

You may appeal against the placement outcome, the Results enquiry outcome or the malpractice determination. The principal of your child's school may be asked to comment on the grounds for your appeal.

You may also appeal if your child is not yet a permanent resident of Australia but you have proof that permanent residency will be granted imminently.

Appeals must be submitted **within 15 working days of the initial placement outcome being released** via the link on our website.

All relevant documentary evidence must be uploaded with your appeal by the due date. Late appeals cannot be accepted.

Parents will be advised whether or not their appeal is made on valid grounds. The link to the appeals form and further details about grounds for appeal can be found at: <https://education.nsw.gov.au/public-schools/selective-high-schools-and-opportunity-classes/year-7/outcome/appeals>.

### Can my offer be cancelled?

If you do not respond to an offer by the due date the Team will send a message reminding you to respond. If there is no response, the offer will be lapsed and will pass to the next student on the reserve list.

If your child does not satisfy all requirements, such as permanent residency, or does not attend to finalise enrolment on the first day of school without a satisfactory explanation, the offer will be cancelled.

Offers will also be cancelled if they are found to be based on false or misleading information.

### What do I need to do to enrol?

If you accept an offer the school will send you enrolment forms in late 2022. You will also receive an 'Authority to attend' letter from the Team in mid-January 2023. Your child will need to present this letter to the school on the first day of the school year.

You will also need to show original documents, such as proof of residency, to the selective high school to complete enrolment.

You will need to meet all other NSW Department of Education enrolment conditions.

Find out about enrolment policy in NSW Department of Education schools at:

<https://education.nsw.gov.au/going-to-a-public-school/enrolment>.

If you need to delay your child's attendance beyond the first day of the school year you must discuss it with the selective high school principal (or with the Team during school holidays) before submitting enrolment forms. The principal may or may not approve the delayed start. You cannot delay enrolment past the first day of Term 2 in the year of entry.

Any extended leave after enrolment must be negotiated with the school principal and is subject to the NSW Department's enrolment policy.

### Who can make enquiries or decisions about my child?

The Team will communicate only with the parents or carers that you list on the application. If you want other people to discuss your child's application with the Team, advise the Team in writing to authorise others to make enquiries or decisions on your behalf.

If relevant court orders or legal restraints apply, upload a copy to your application so the Team can comply with them.

The Team does not correspond with students or speak to them on the telephone. Please ensure your login details are kept secure and shared only with authorised parents or carers.

### Where can I get further information?

Ask your child's teacher if you want advice about whether your child might benefit from attending a selective high school.

Find out about courses and programs offered by specific selective high schools using the list of school websites at the end of this document.

Find updated information about selective high school placement procedures at: <https://education.nsw.gov.au/public-schools/selective-high-schools-and-opportunity-classes/year-7>.

# Frequently asked questions

## 1. **Must I list three schools in the application?**

You can list one, two or three choices of selective high school. You should list only schools you would definitely accept an offer to. Please consider your choices carefully. If you intend applying for the Conservatorium High School (a specialist high school) you can choose 3 selective high schools as well.

## 2. **Does the order in which I list my choices matter?**

Yes. If your child qualifies for more than one of your choices, you will be offered a place only at the school you put as the highest choice. If, however, your child qualifies for only one of your choices, you will be offered a place regardless of whether it was your first, second or third choice.

Selection committees do not select students based on whether parents chose their school first, second or third. Selection is made on the basis of academic merit.

## 3. **What provision is made for students from non-government schools?**

The selection procedures are the same as for government school students. The only difference is that the Team advises only government school principals about the students from their school who have applied.

When applying, parents are asked to give consent for the Team to contact the principal to confirm any reasonable adjustments for disability that are provided in the classroom.

Parents of students from non-government schools must ask the principal to complete the 'Principal's page for provision of information about the application' (emailed with their application confirmation) and then must ensure it is returned to the Team by 1 December 2021.

## 4. **What can I do to prepare my child for the Selective High School Placement Test?**

You will receive information about the test two weeks prior to test day. Practice questions for the test are available at: <https://education.nsw.gov.au/public-schools/selective-high-schools-and-opportunity-classes/year-7/the-test>.

Encourage your child to use the practice tests to practise answering the questions quickly on the sample answer sheet.

The results of practice items do not mean that your child will score the same in the test. Selection committees and appeals panels will not make any decision based on your child's score on practice test items.

The NSW Department of Education does not endorse coaching for the Selective High School Placement Test.

## 5. **Can I change my choice of schools after submitting the application?**

You can make a change of choice without explanation up to 24 April 2022 via your application dashboard. After this date there must be extenuating circumstances which are serious and well documented for a change to be considered. Any late change of choice must be approved by the Team.

## 6. **What are reserve lists?**

Reserve lists are lists of students whose placement scores are not high enough to gain an initial offer but are high enough to be on a waiting list if vacancies arise. Selection committees decide the students who will receive offers and who will be placed on reserve lists. Students with offers for a particular school will have higher placement scores than those who are on the reserve list or are unsuccessful for that school.

### **How does the reserve list work?**

If your child is on a reserve list for a selective high school, the number on the placement outcome advice shows his or her position on the list. How quickly the Team offers places to those on a reserve list depends on whether parents accept or decline offers to that school, and whether other students receive further offers to a school of higher choice and therefore decline the offer to the lower choice. If your child's position is reached on the reserve list, the Team will contact you with an offer.

From early August you can track the number on the reserve list of the last student offered a place at each selective high school at <https://education.nsw.gov.au/public-schools/selective-high-schools-and-opportunity-classes/year-7/outcome/year-7-reserves>.

After 3:00pm on 14 December 2022, you will be offered a place from the reserve list only if you have **not** accepted a place at another selective high school or if you have declined all other offers.

- 7. If my outcome advice indicates that my child is unsuccessful, can his or her name be placed on reserve list?** Students who are unsuccessful cannot be placed on a reserve list because their scores were not high enough. Students cannot be placed on reserve lists for schools which were not listed as choices in their application, even if those schools may require lower entry scores.
- 8. What does the Selective High School Placement Test tell me about my child's performance?**  
The Selective High School Placement Test is designed to measure ability. The test helps to identify students for entry into selective high schools on the basis of academic merit. The test is more difficult than other school assessments because it is designed to identify gifted and high potential students. It is not meant to be a diagnostic test to identify the student's strengths and weaknesses in English or mathematics performance. The student's primary school can advise you on your child's performance in these areas.
- 9. If my child was unsuccessful for opportunity class placement, does it mean he or she will be unsuccessful for selective high school entry?**  
Not necessarily, as the cohort of students they are compared with is different. Students can improve over the time since they applied for opportunity class placement. Many high potential and gifted students applying for selective schools did not apply for opportunity class placement. Not all students from opportunity classes are successful for selective high school entry. There are more than twice as many Year 7 places in selective high schools as there are Year 5 places in opportunity classes.
- 10. If my child receives an offer to one of my lower choices as well as being on the reserve list for one of my higher choices, do I have to give up the offer in order to stay on the reserve list?**  
You can accept an offer to one school and stay on the reserve list for one or more of your higher choices until 3:00pm on 14 December 2022. After that time no further offers will be made to students who accepted placement in a selective high school and have not later declined the offer.
- 11. What should I do if my child does not get into a selective high school?**  
As there is approximately one place for every four applicants, not all students can be placed. Be supportive and explain to your child that he or she can be very successful at a comprehensive high school. Not all high potential and gifted students apply for selective high schools.  
  
Comprehensive high schools implement their own provisions for high potential and gifted students under the NSW Department of Education's gifted high potential and strategy at <https://education.nsw.gov.au/teaching-and-learning/high-potential-and-gifted-education>.
- 12. What score does a student have to gain to be successful for selective high school placement?**  
There is no fixed score that a student has to achieve to be successful for placement at a particular selective high school as students are placed in rank order of academic merit to fill the available vacancies until the reserve lists close in May of the placement year.  
  
The greater the demand for the school, the higher the required entry score is likely to be.
- 13. If my child is one of the last to be made an offer, does that mean he or she will struggle at a selective high school?**  
The selection committee offers places or reserve list positions only to those students they think are capable of doing well at a selective high school. There are many things which can affect student performance, including your child's willingness to learn, his or her response to teachers and interaction with other students. While some students who receive late offers might have problems, the majority should have no difficulties.
- 14. Why do some partially selective high schools combine selective and comprehensive students in the senior years or for electives in the junior years?**  
Some partially selective high schools do this. It allows the school to better organise the timetable and offer more electives than would be possible if the selective students were kept as a separate group. However, since high performing students tend to make similar subject level choices, they are quite often still grouped selectively.
- 15. Does my child get an advantage if we live very close to a selective high school?**  
No. Selective high schools are not zoned. Selection committees do not consider travelling times and transport arrangements when offering places, unless you are applying for entry to one of the three agricultural selective high schools as a boarder.

## Selective High Schools with Year 7 vacancies in 2023

You can select up to three selective high schools, in order of preference.

School Details	Contact and Website
<b>Fully Selective - Co-educational</b>	
Baulkham Hills High School Windsor Road, Baulkham Hills 2153	Phone: (02) 9639 8699 Web: <a href="https://baulkham-h.schools.nsw.gov.au/">https://baulkham-h.schools.nsw.gov.au/</a> Email: baulkham-h.school@det.nsw.edu.au
Caringbah High School Willarong Road, Caringbah 2229	Phone: (02) 9524 3859 Web: <a href="https://caringbah-h.schools.nsw.gov.au/">https://caringbah-h.schools.nsw.gov.au/</a> Email: caringbah-h.school@det.nsw.edu.au
Fort Street High School Parramatta Road, Petersham 2049	Phone: (02) 8585 1620 Web: <a href="https://www.fortstreet.nsw.edu.au/">https://www.fortstreet.nsw.edu.au/</a> Email: fortstreet-h.school@det.nsw.edu.au
Girraween High School Gilba Road, Girraween 2145	Phone: (02) 9636 7293 Web: <a href="https://girraween-h.schools.nsw.gov.au/">https://girraween-h.schools.nsw.gov.au/</a> Email: girraween-h.school@det.nsw.edu.au
Gosford High School Racecourse Road, Gosford 2250	Phone: (02) 4325 2048 Web: <a href="https://gosford-h.schools.nsw.gov.au/">https://gosford-h.schools.nsw.gov.au/</a> Email: gosford-h.school@det.nsw.edu.au
Northern Beaches Secondary College Manly Campus 138 Abbott Rd, North Curl Curl 2099	Phone: (02) 9905 3982 Web: <a href="https://nbscmanlys-h.schools.nsw.gov.au/">https://nbscmanlys-h.schools.nsw.gov.au/</a> Email: nbscmanlys-h.school@det.nsw.edu.au
Merewether High School Chatham Street, Broadmeadow 2292	Phone: (02) 4969 3855 Web: <a href="https://merewether-h.schools.nsw.gov.au/">https://merewether-h.schools.nsw.gov.au/</a> Email: merewether-h.school@det.nsw.edu.au
Penrith High School High Street, Penrith 2750	Phone: (02) 4721 0529 Web: <a href="https://penrith-h.schools.nsw.gov.au/">https://penrith-h.schools.nsw.gov.au/</a> Email: penrith-h.school@det.nsw.edu.au
Smith's Hill High School Gipps Street, Wollongong 2500	Phone: (02) 4229 4266 Web: <a href="https://smithshill-h.schools.nsw.gov.au/">https://smithshill-h.schools.nsw.gov.au/</a> Email: smithshill-h.school@det.nsw.edu.au
<b>Fully Selective - Male</b>	
Normanhurst Boys High School Pennant Hills Road, Normanhurst 2076	Phone: (02) 9489 1077 Web: <a href="https://normanhurstboys.nsw.edu.au/">https://normanhurstboys.nsw.edu.au/</a> Email: normanhurst-h.school@det.nsw.edu.au
North Sydney Boys High School Falcon Street, Crows Nest 2065	Phone: (02) 9955 1565 Web: <a href="https://northsydbo-h.schools.nsw.gov.au/">https://northsydbo-h.schools.nsw.gov.au/</a> Email: northsydbo-h.school@det.nsw.edu.au
Sydney Boys High School Moore Park, Surry Hills 2010	Phone: (02) 9361 6910 Web: <a href="http://www.sydneyboyshigh.com">http://www.sydneyboyshigh.com</a> Email: office@sbhs.nsw.edu.au
Sydney Technical High School Forest Road, Bexley 2207	Phone: (02) 9587 5899 Web: <a href="https://www.sths.nsw.edu.au/">https://www.sths.nsw.edu.au/</a> Email: sydneytech-h.school@det.nsw.edu.au
<b>Fully Selective - Female</b>	
Hornsby Girls High School Edgeworth David Avenue, Hornsby 2077	Phone: (02) 9476 5711 Web: <a href="https://hornsbygir-h.schools.nsw.gov.au/">https://hornsbygir-h.schools.nsw.gov.au/</a> Email: hornsbygir-h.school@det.nsw.edu.au

School Details	Contact and Website
<b>Fully Selective - Female (cont.)</b>	
North Sydney Girls High School 365 Pacific Highway, Crows Nest 2065	Phone: (02) 9922 6666 Web: <a href="http://www.northsydgi-h.schools.nsw.edu.au/public/">http://www.northsydgi-h.schools.nsw.edu.au/public/</a> Email: northsydgi-h.school@det.nsw.edu.au
St George Girls High School Victoria Street, Kogarah 2217	Phone: (02) 9587 5902 Web: <a href="http://www.sgghs.com.au">http://www.sgghs.com.au</a> Email: stgeorgegi-h.school@det.nsw.edu.au
Sydney Girls High School Anzac Parade, Surry Hills 2010	Phone: (02) 9331 2336 Web: <a href="https://www.sghs.nsw.edu.au/">https://www.sghs.nsw.edu.au/</a> Email: administration@sghs.nsw.edu.au
<b>Partially Selective - Co-educational</b>	
Alexandria Park Community School* Park Road, Alexandria 2015	Phone: (02) 9698 1967 Web: <a href="https://alexparkcs-c.schools.nsw.gov.au">https://alexparkcs-c.schools.nsw.gov.au</a> Email: alexparkcs-c.school@det.nsw.edu.au
Armidale Secondary College Butler Street Armidale 2350	Phone: (02) 6776 7466 Web: <a href="https://armidale-s.schools.nsw.gov.au">https://armidale-s.schools.nsw.gov.au</a> Email: armidale-s.school@det.nsw.edu.au
Balmain Campus, Sydney Secondary College Terry Street, Rozelle 2039	Phone: (02) 9810 0471 Web: <a href="https://balmain-h.schools.nsw.gov.au/">https://balmain-h.schools.nsw.gov.au/</a> Email: balmain-h.school@det.nsw.edu.au
Bonnyrigg High School Elizabeth Drive, Bonnyrigg 2177	Phone: (02) 9823 1184 Web: <a href="https://bonnyrigg-h.schools.nsw.gov.au/">https://bonnyrigg-h.schools.nsw.gov.au/</a> Email: bonnyrigg-h.school@det.nsw.edu.au
Chatswood High School Centennial Ave, Chatswood 2067	Phone: (02) 9419 3611 Web: <a href="https://www.chatswoodhighschool.com.au/">https://www.chatswoodhighschool.com.au/</a> Email: chatswood-h.school@det.nsw.edu.au
Elizabeth Macarthur High School Waterworth Drive, Narellan 2567	Phone: (02) 4646 1899 Web: <a href="https://elizabeth-h.schools.nsw.gov.au/">https://elizabeth-h.schools.nsw.gov.au/</a> Email: elizabeth-h.school@det.nsw.edu.au
Gorokan High School Goobarabah Ave, Gorokan 2263	Phone: (02) 4393 7000 Web: <a href="https://gorokan-h.schools.nsw.gov.au/">https://gorokan-h.schools.nsw.gov.au/</a> Email: gorokan-h.school@det.nsw.edu.au
Grafton High School Oliver & Mary Streets, Grafton 2460	Phone: (02) 6642 3355 Web: <a href="https://grafton-h.schools.nsw.gov.au/">https://grafton-h.schools.nsw.gov.au/</a> Email: grafton-h.school@det.nsw.edu.au
Karabar High School Donald Road, Queanbeyan 2620	Phone: (02) 6298 4333 Web: <a href="https://www.karabarhigh.com.au/">https://www.karabarhigh.com.au/</a> Email: karabar-h.school@det.nsw.edu.au
Koorringal High School Ziegler Avenue, Wagga Wagga 2650	Phone: (02) 6922 5155 Web: <a href="https://kooringal-h.schools.nsw.gov.au/">https://kooringal-h.schools.nsw.gov.au/</a> Email: kooringal-h.school@det.nsw.edu.au
Leichhardt Campus, Sydney Secondary College 210 Balmain Road, Leichhardt 2040	Phone: (02) 9560 2565 Web: <a href="https://leichhardt-h.schools.nsw.gov.au/">https://leichhardt-h.schools.nsw.gov.au/</a> Email: leichhardt-h.school@det.nsw.edu.au
Macquarie Fields High School Harold Street, Macquarie Fields 2564	Phone: (02) 9605 3111 Web: <a href="https://macfields-h.schools.nsw.gov.au/">https://macfields-h.schools.nsw.gov.au/</a> Email: macfields-h.school@det.nsw.edu.au
Moorebank High School Bangalow Avenue, Moorebank 2170	Phone: (02) 9601 3999 Web: <a href="https://moorebank-h.schools.nsw.gov.au/">https://moorebank-h.schools.nsw.gov.au/</a> Email: moorebank-h.school@det.nsw.edu.au



School Details	Contact and Website
<b>Partially Selective - Co-educational (Cont.)</b>	
Parramatta High School Great Western Hwy & Pitt St, Parramatta 2150	Phone: (02) 9635 8644 Web: <a href="https://parramatta-h.schools.nsw.gov.au/">https://parramatta-h.schools.nsw.gov.au/</a> Email: parramatta-h.school@det.nsw.edu.au
Peel High School 88 Gunnedah Rd, Tamworth 2340	Phone: (02) 6765 7088 Web: <a href="https://peel-h.schools.nsw.gov.au/">https://peel-h.schools.nsw.gov.au/</a> Email: peel-h.school@det.nsw.edu.au
Prairiewood High School Prairievale Road, Wetherill Park 2164	Phone: (02) 9725 5444 Web: <a href="https://prairiewoo-h.schools.nsw.gov.au/">https://prairiewoo-h.schools.nsw.gov.au/</a> Email: prairiewoo-h.school@det.nsw.edu.au
Richmond High School - Richmond Agricultural College (Day students only - co-educational) Students must study agriculture. Lennox Street, Richmond 2753  The Richmond Agricultural College operates across two campuses: Richmond High School and Richmond Agricultural College Centre of Excellence, Vines Drive Western Sydney University Hawkesbury Campus.	Phone: (02) 4578 1177 Web: <a href="https://richmond-h.schools.nsw.gov.au/">https://richmond-h.schools.nsw.gov.au/</a> and <a href="https://richmondagcollege-h.schools.nsw.gov.au">https://richmondagcollege-h.schools.nsw.gov.au</a> Emails: richmond-h.school@det.nsw.edu.au and richmondagcollege-h.school@det.nsw.edu.au
Rose Bay Secondary College* Hardy Street, Dover Heights 2030	Phone: (02) 9301 0300 Web: <a href="https://rosebay-h.schools.nsw.gov.au/">https://rosebay-h.schools.nsw.gov.au/</a> Email: rosebay-h.school@det.nsw.edu.au
Ryde Secondary College 5 Malvina Street, Ryde 2112	Phone: (02) 9809 4894 Web: <a href="http://www.rsc.nsw.edu.au">http://www.rsc.nsw.edu.au</a> Email: rydesc-h.school@det.nsw.edu.au
Sefton High School 41-43 Hector Street, Sefton 2162	Phone: (02) 9644 4800 Web: <a href="https://sefton-h.schools.nsw.gov.au/">https://sefton-h.schools.nsw.gov.au/</a> Email: sefton-h.school@det.nsw.edu.au
Tempe High School* Unwins Bridge Road, Tempe 2044	Phone: (02) 9558 2336 Web: <a href="https://tempe-h.schools.nsw.gov.au/">https://tempe-h.schools.nsw.gov.au/</a> Email: tempe-h.school@det.nsw.edu.au
<b>Partially Selective - Male</b>	
Blacktown Boys High School Sunnyholt Road & Fifth Ave, Blacktown 2148	Phone: (02) 9622 1558 Web: <a href="https://blacktownb-h.schools.nsw.gov.au/">https://blacktownb-h.schools.nsw.gov.au/</a> Email: blacktownb-h.school@det.nsw.edu.au
Granville Boys High School Mary Street, Granville 2142	Phone: (02) 9637 0489 Web: <a href="https://granvilleb-h.schools.nsw.gov.au/">https://granvilleb-h.schools.nsw.gov.au/</a> Email: granvilleb-h.school@det.nsw.edu.au
<b>Partially Selective - Female</b>	
Auburn Girls High School Hunter Street and Braemar Ave, Auburn 2144	Phone: (02) 9649 6949 Web: <a href="https://www.auburng-h.nsw.edu.au/">https://www.auburng-h.nsw.edu.au/</a> Email: auburng-h.school@det.nsw.edu.au
Blacktown Girls High School Fifth Ave, Blacktown 2148	Phone: (02) 9831 7577 Web: <a href="https://blacktowng-h.schools.nsw.gov.au/">https://blacktowng-h.schools.nsw.gov.au/</a> Email: blacktowng-h.school@det.nsw.edu.au

School Details	Contact and Website
Fully Selective - Agricultural	
Farrer Memorial Agricultural High School (Male boarding students only) 585 Calala Lane, Tamworth 2340	Phone: (02) 6764 8600 Web: <a href="https://farreragri-h.schools.nsw.gov.au/">https://farreragri-h.schools.nsw.gov.au/</a> Email: farreragri-h.school@det.nsw.edu.au
Farrer Memorial Agricultural High School (Male day students only) 585 Calala Lane, Tamworth 2340	
Hurlstone Agricultural High School (Female boarding students only) Roy Watts Road, Glenfield 2167	Phone: (02) 9829 9222 Web: <a href="https://hurlstone-h.schools.nsw.gov.au/">https://hurlstone-h.schools.nsw.gov.au/</a> Email: hurlstone-h.school@det.nsw.edu.au
Hurlstone Agricultural High School (Male boarding students - Rural applicants only) Roy Watts Road, Glenfield 2167	
Hurlstone Agricultural High School (Day students only - co-educational) Roy Watts Road, Glenfield 2167	
James Ruse Agricultural High School (Day students only - co-educational) Felton Road, Carlingford 2118	Phone: (02) 9871 7126 Web: <a href="https://jamesruse-h.schools.nsw.gov.au/">https://jamesruse-h.schools.nsw.gov.au/</a> Email: jamesruse-h.school@det.nsw.edu.au
Yanco Agricultural High School (Female boarding students only) 259 Euroley Road, Yanco 2703	Phone: (02) 6951 1500 Web: <a href="https://yancoag-h.schools.nsw.gov.au/">https://yancoag-h.schools.nsw.gov.au/</a> Email: yancoag-h.school@det.nsw.edu.au
Yanco Agricultural High School (Male boarding students only) 259 Euroley Road, Yanco 2703	
Virtual Selective - Co-educational (Selective for English, mathematics and science. Students study other subjects at their host high schools in rural locations).	
Aurora College** Rural and remote, virtual selective high school	Phone: 1300 287 629 Web: <a href="http://www.aurora.nsw.edu.au/">http://www.aurora.nsw.edu.au/</a> Email: auroracoll-h.school@det.nsw.edu.au

Notes:

\* Alexandria Park Community School, Rose Bay Secondary College and Tempe High School have targeted places available for Aboriginal students.

\*\*Only students who will be enrolled in Year 7 in a government high school in a rural or remote area (excluding fully or partially selective high schools) may apply for Aurora College, the virtual selective high school. You will be asked to enter the name of the intended host school when applying.

The Conservatorium High School is not part of the selective high school program. It is a specialist high school that includes results from the Selective High School Placement Test in its admission assessments.